



COVID-19 Exposure Workflow for **STAFF**

Any person who fits the description for **Person A** or **Person B** must notify the school as soon as possible and **should not come on campus until they are cleared to do so.**

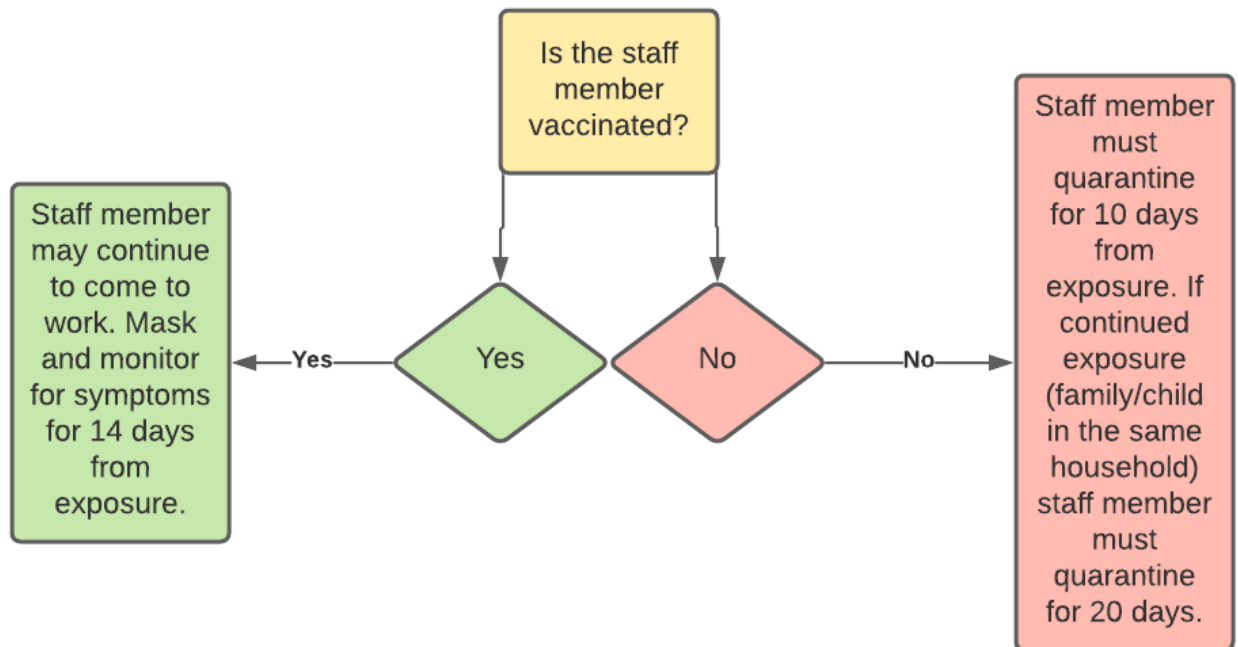
CONFIRMED CASE OF COVID-19 PERSON A	1 DEGREE OF SEPARATION PERSON B	2 DEGREES OF SEPARATION PERSON C	3 DEGREES OF SEPARATION PERSON D
Person A - has a <u>lab-confirmed case</u> of COVID-19 <u>or is symptomatic</u> and has a known COVID-19 exposure.	Person B - has been in close contact with Person A, but is not symptomatic. (Within less than 6 feet for 15 minutes or more in a 24 hour period.)	Person C - has been in direct contact with person B.	Person D - is the relative or friend of Person C, and has not had contact with anyone who has been tested and/or quarantined.
		ATTEND SCHOOL, but monitor for symptoms	ATTEND SCHOOL
Person A is isolated.	See Person B Workflow on Page 2.	Person C is able to come to school unless/until Person B becomes positive or symptomatic. Family/self will monitor for symptoms. School may perform active screening.	
NOT ALLOWED INTO SCHOOL	Follow instructions in Person B Workflow on page 2 to determine the outcome.	ALLOWED INTO SCHOOL	ALLOWED INTO SCHOOL
See below for directions about when to return to work/school		Person C can return to school unless Person B tests positive or becomes symptomatic	

Individuals with symptoms who test positive for COVID-19, may return to work or school when:

- At least 10 days have passed since symptoms first appeared, AND
- At least 24 hours have passed with no fever (without use of fever-reducing medications), AND
- Other symptoms have improved.

Individuals who test positive for COVID-19 who never develop symptoms, may return to work or school 10 days after the date of specimen collection/date of test for COVID-19.

Person B Workflow:



If you cannot avoid close contact with someone with COVID-19 (and you are not vaccinated):

Your last day of self-quarantine is 10 days from the date the person with COVID-19 completed their self-isolation. This means they were told by their doctor or local health department it was safe to be near others. (Total of 20 days from the start of the covid + person's illness symptoms or positive test.)

Person with COVID-19 completes self-isolation on May 15

+ 10 days

= Your last day in self-quarantine is May 25

** When exposure is from a household member with COVID-19, *consider* quarantine regardless of vaccination status.